

What is Calprotectin?

Calprotectin is a protein found in white blood cells. When you have inflammation in the intestines, white blood cells enter the intestines and the stool. When those cells break down, they release calprotectin into the stool. Thus it can be a measure of inflammation in the intestine.

Most patients with Inflammatory Bowel Disease have periods of remission with intermittent relapses (flares). Calprotectin can increase months before clinical symptoms occur. Doctors use calprotectin, among other tools, to monitor disease activity to help them decide whether the patient's treatment can be continued or needs adjustment.

Why does my doctor request a stool sample?

Your doctor may order this test for you in order to learn if you are having intestinal inflammation (even if you feel well). The results of this test will help your doctor to know how to treat you and/or if further testing is needed.

What is IBDoc®?

IBDoc® is an easy to use home testing system for patients with IBD to test their stool calprotectin from the comfort and privacy of their own homes - empowering them, connecting them with their doctors and allowing them to manage the disease as a team.

For more information

1

Visit us:
www.ibdoc.net

2



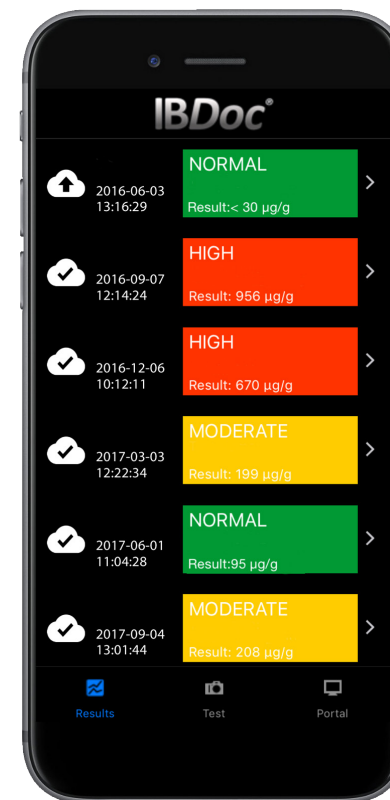
Watch the
Tutorial Video
on YouTube

3

Contact us:
support@ibdoc.net

IBDoc®

Calprotectin Home Test



CE 0123

Health Canada Licence: 98903, Device class: 3
IBDoc® is not available for sale in the US.

IBDoc®, CalApp®, BÜHLMANN fCAL® and Quantum Blue® are registered trademarks of BÜHLMANN in many countries.



BÜHLMANN Laboratories AG
Baselstrasse 55
4124 Schönenbuch
Switzerland

Phone +41 61 487 12 12
Fax orders +41 61 487 12 99
info@buhlmannlabs.ch
www.buhlmannlabs.ch

Ordering code:

BI-IBDOC
LF-IBDOC8

IBDoc Starter Kit
IBDoc Calprotectin Kit (8 tests)

MFIB063ML-01 E



First steps

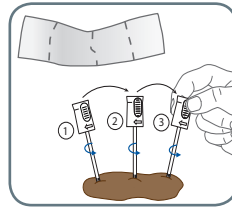
Before you can use IBDoc® make sure you have the following:

- A smartphone that is validated for the use of IBDoc®. You can find a complete list of validated smartphones on www.ibdoc.net.
- You will need to give your email address to your doctor to set up an account for you. You will then receive an email from support@ibdoc.net to set your password. If for any reason you do not receive the email, you can reset your password on www.ibdoc-portal.net.
- Go to the Apple or Google App Store and download the CalApp®. Have your App or Google login information ready.

Important Points

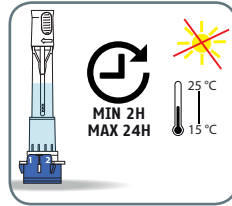
- Keep the IBDoc® test kit refrigerated, you can transport without cooling when you bring it home from your doctor's office.
- Use the first morning stool, when possible.
- If you have problems to collect the stool sample i.e. the stool does not stick to the grooves of the CALEX® Valve device, perform the test on another day. Use a new IBDoc® test.
- Flick the CALEX® Valve extraction tube before releasing the sample.
- Before performing the first test, read the full instruction for use available under www.ibdoc.net. This brochure is only for information purposes.

1. Stool Collection

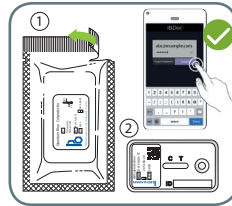


Collect a stool sample using the stool collection sheet and CALEX® Valve:

- Make sure the stool does not come into contact with water or urine!
- Make sure that all grooves are completely-filled with stool.
- Close the CALEX® Valve with a click.
- Wait 2 to 24 hours.

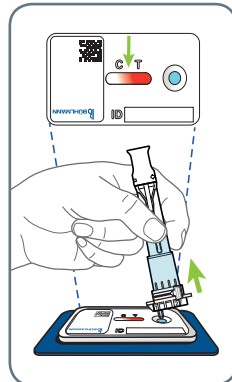
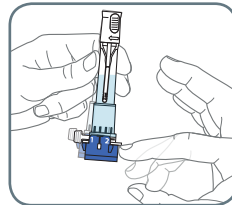


2. Test cassette loading

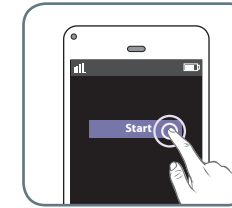


Unpack the test cassette, then:

- Shake the CALEX® Valve well and flick it to remove any air bubbles.
- Remove the protection cap and place the outlet of the CALEX® Valve onto the sample loading port.
- Release the sample by turning the throttle from position 1 to 2.
- Wait until the reddish front reaches the middle between the "T" and "C" on the test cassette.



3. Test cassette scanning



Start the timer in the CalApp®, then:

- After the 12 minutes are up click on "scan".
- Scan the test cassette by aligning the yellow frame in the camera view with the edges of test cassette. The CalApp® is focusing and calculates a result automatically.
- When you click "save" the result is automatically uploaded to the IBDoc® Portal and your doctor will receive an email alert.

